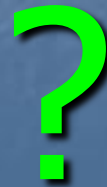


Raise Your Attendance, -Raise YOUR Chances!

What does "***Good attendance***"
mean?



- Do you know what your child's attendance and punctuality percentage is?



This is Simone. She is in Year 5 and has 90% attendance.

- Is that good?
- What does this mean?



Simone thinks this is pretty good, so do her parents. Are they right?

90% attendance = **1/2 day missed**
every week!!

(Would your boss like you to be off work this much??). That's practically part time!



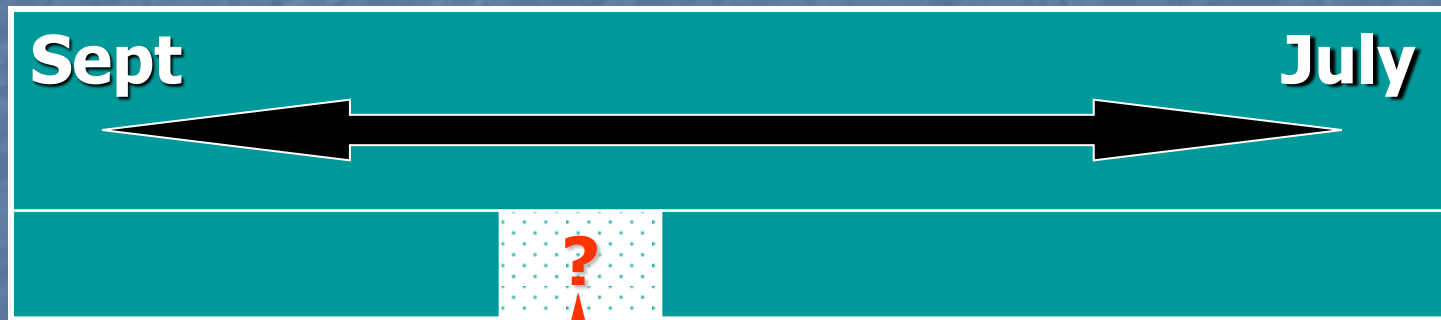
Mon	Tue	Wed	Thur	Fri
		?		

Absent half a day every week

Lets looks a little closer.....

1 school year at **90%** attendance = **4** whole weeks of lessons **MISSED!!!**

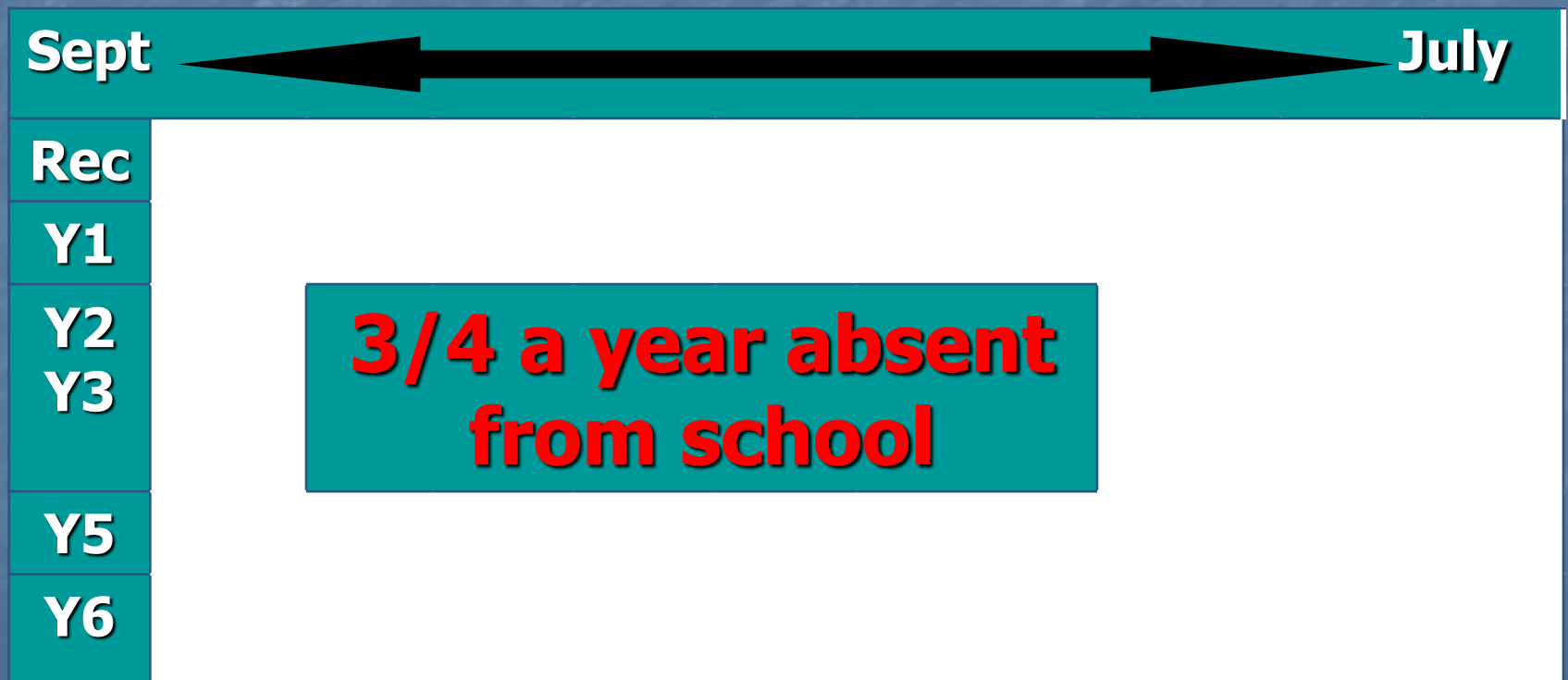
38 school weeks



Absent for 4 weeks

90% attendance over **7** years of primary school....

= **3/4** a school **year missed!**



Punctuality

- School starts at 8:50
- Please arrive on time every day
- Every minute counts
- 5 mins late twice a week = 380 mins
- Sept – Dec 1623 Late arrivals to school

Sept – Dec 2015

- Nursery 18 Lates 1 U – very Late!
- Reception 73 Lates 35 U
- Year 1 188 Lates 20 U
- Year 2 175 Lates 32 U
- Year 3 249 Lates 46 U
- Year 4 219 Lates 30 U
- Year 5 188 Lates 16 U
- Year 6 305 Lates 28 U

What impact might this have on Simone's life.....?

Research suggests that **17 missed school days** a year = GCSE grade **DROP** in achievement. (DfES)

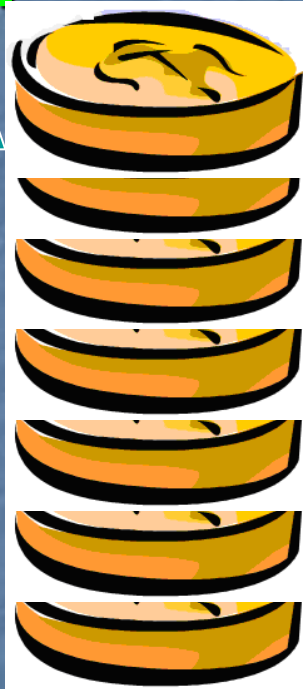
The greater the attendance the greater the achievement.



What could Simone's potential earnings look like?

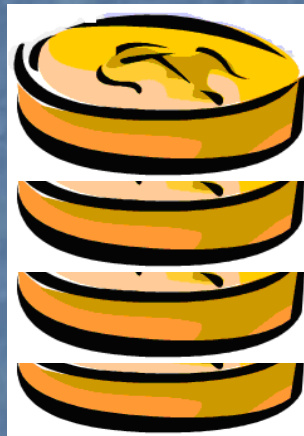
Graduate degree

**£15.01
per hour**



A levels

**£10.25
per hour**



GCSE's

**£9.02
per hour.**



no qualifications

**£5.30per
hour.**



Potential Earnings average per hour

Qualifications

What do you want to earn?

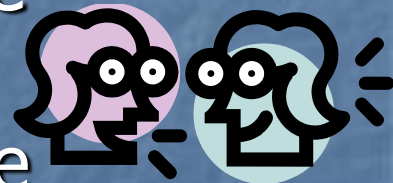
So **90%** is **not** as good as it first seemed.

What can **I** do to increase my attendance?



Ways to increase attendance:

1. **Talk** regularly with your parent(s)/carer(s) about school and how you feel about it.
2. **Remember to phone** the school as soon as possible to tell them why you are absent.
3. Only stay at home for **genuine** illness.
4. **Avoid** taking holidays in school time.
5. Get to know at **least one member of staff** at school who you can speak to if there are problems.
6. **Ensure** you leave for school in good time
7. **Arrange** birthday treats, shopping and **non-urgent** medical and dental appointments out of school hours.



Winston Way Attendance Team

- Inclusion Assistant Head Teacher
- Assistant Head Teachers
- Attendance Officer and Learning mentor
- Communication – letters/texts/phone calls
- Meetings held in school
- Rewards/ incentives.

Do you know what can happen if you have poor attendance?

- Referral to Education Welfare Service for poor school attendance/lateness.
- EWO will visit your parent/carer at home
- EWO may arrange a meeting in school
- EWO may refer to other agencies to support the family or young person
- If attendance fails to improve after support has been provided, the EWO will consider starting legal action against the parent(s)/Carer(s).

Penalty Notice

- Section 444 Education Act
- £120 per parent per child
- Reduced to £60 if paid within 21 days

Do you know what can happen to your parent(s) or Carer(s)??

- Parent(s)/Carer(s) are asked to attend court.
- Parent(s)/Carer(s) can be fined up to £2,500
- They may receive a Parenting Order, which requires the parent/ carer to attend Parenting Classes.
- Parent(s)/Carer(s) can receive a community sentence

Attend and Achieve!

- If a school can **improve** attendance by **1%**, they will see a **5-6%** improvement in **attainment**. (Department for Education and Skills)
- Please **help** us and **you** by ensuring your attendance remains above **96%**, allowing you to **achieve** your potential.



Reflection and Feedback

- Would you like to know any more about attendance and punctuality?
- Please stay if you would like to speak to anyone today.
- Please fill in a comments card on the way out.
- See you again soon